

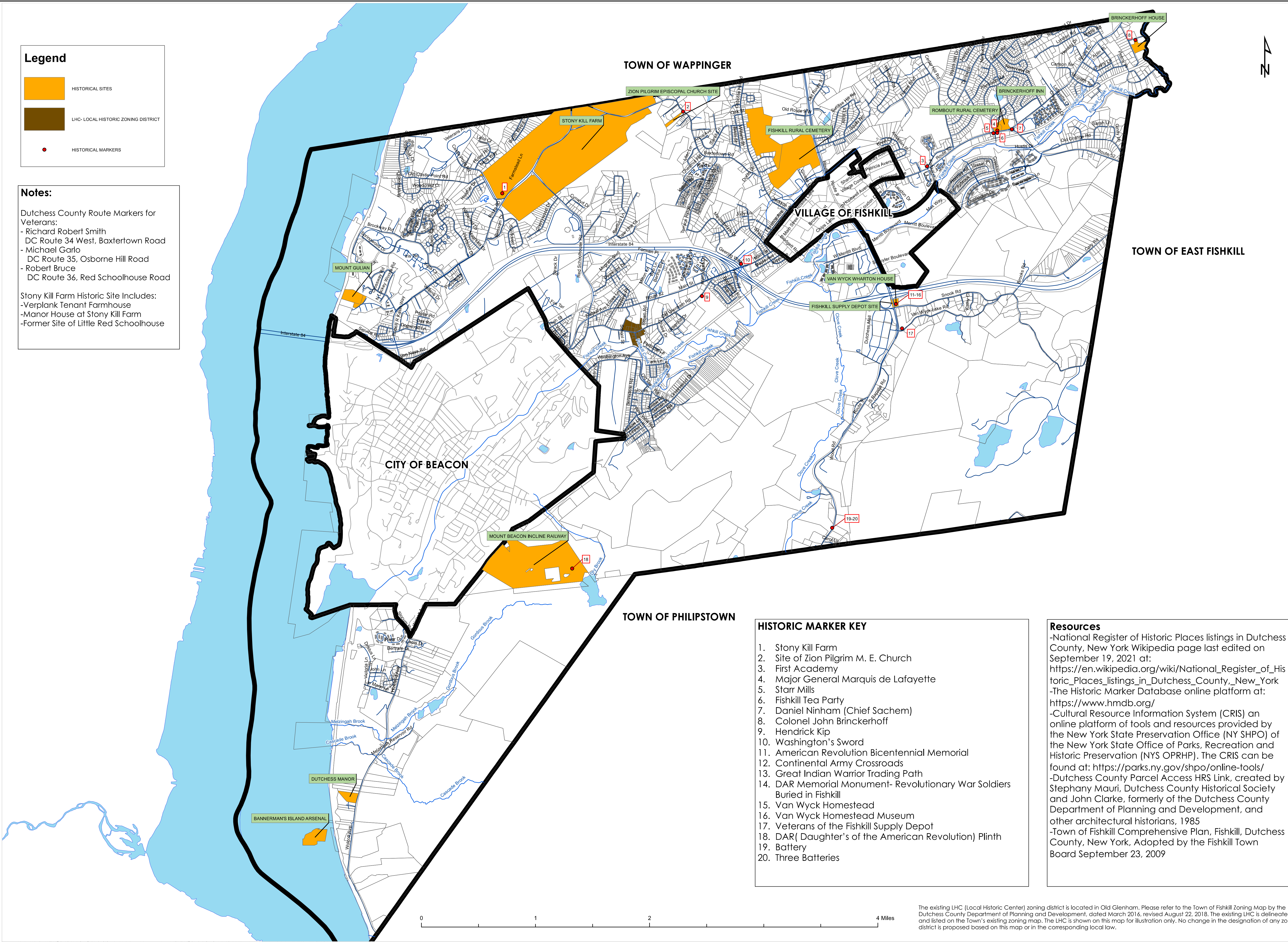
**Legend**

- HISTORICAL SITES
- LHC- LOCAL HISTORIC ZONING DISTRICT
- HISTORICAL MARKERS

**Notes:**

Dutchess County Route Markers for Veterans:  
 - Richard Robert Smith  
 - DC Route 34 West, Baxtertown Road  
 - Michael Garlo  
 - DC Route 35, Osborne Hill Road  
 - Robert Bruce  
 - DC Route 36, Red Schoolhouse Road

Stony Kill Farm Historic Site Includes:  
 - Verplank Tenant Farmhouse  
 - Manor House at Stony Kill Farm  
 - Former Site of Little Red Schoolhouse



CPLteam.com  
 ARCHITECTURE, ENGINEERING, PLANNING.

26 IBM Rd  
 Poughkeepsie, NY 12601  
 (845) 454-3411

DATE: 8/2/21  
 REVISIONS:  
 9/10/21  
 10/20/21  
 10/29/21

DRAWN: MS

CHECKED: ETA

PROJ. #: 15535.00

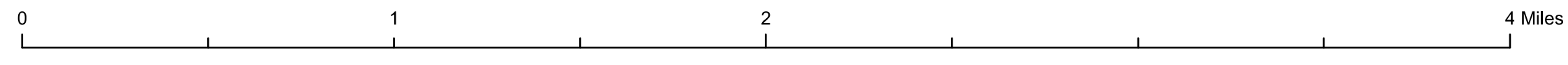
HISTORIC AND CULTURAL RESOURCES

TOWN OF FISHKILL, NEW YORK

- HISTORIC MARKER KEY**
1. Stony Kill Farm
  2. Site of Zion Pilgrim M. E. Church
  3. First Academy
  4. Major General Marquis de Lafayette
  5. Starr Mills
  6. Fishkill Tea Party
  7. Daniel Ninham (Chief Sachem)
  8. Colonel John Brinckerhoff
  9. Hendrick Kip
  10. Washington's Sword
  11. American Revolution Bicentennial Memorial
  12. Continental Army Crossroads
  13. Great Indian Warrior Trading Path
  14. DAR Memorial Monument- Revolutionary War Soldiers Buried in Fishkill
  15. Van Wyck Homestead
  16. Van Wyck Homestead Museum
  17. Veterans of the Fishkill Supply Depot
  18. DAR( Daughter's of the American Revolution) Plinth
  19. Battery
  20. Three Batteries

**Resources**

- National Register of Historic Places listings in Dutchess County, New York Wikipedia page last edited on September 19, 2021 at: [https://en.wikipedia.org/wiki/National\\_Register\\_of\\_Historic\\_Places\\_listings\\_in\\_Dutchess\\_County,\\_New\\_York](https://en.wikipedia.org/wiki/National_Register_of_Historic_Places_listings_in_Dutchess_County,_New_York)
- The Historic Marker Database online platform at: <https://www.hmdb.org/>
- Cultural Resource Information System (CRIS) an online platform of tools and resources provided by the New York State Preservation Office (NY SHPO) of the New York State Office of Parks, Recreation and Historic Preservation (NYS OPRHP). The CRIS can be found at: <https://parks.ny.gov/shpo/online-tools/>
- Dutchess County Parcel Access HRS Link, created by Stephany Mauri, Dutchess County Historical Society and John Clarke, formerly of the Dutchess County Department of Planning and Development, and other architectural historians, 1985
- Town of Fishkill Comprehensive Plan, Fishkill, Dutchess County, New York, Adopted by the Fishkill Town Board September 23, 2009



The existing LHC (Local Historic Center) zoning district is located in Old Glenham. Please refer to the Town of Fishkill Zoning Map by the Dutchess County Department of Planning and Development, dated March 2016, revised August 22, 2018. The existing LHC is delineated and listed on the Town's existing zoning map. The LHC is shown on this map for illustration only. No change in the designation of any zoning district is proposed based on this map or in the corresponding local law.

FIGURE 1