

TOWN OF FISHKILL

COMPREHENSIVE PLAN UPDATE (CPU)

Town of Fishkill, Dutchess County, New York

Adopted by the Town of Fishkill Town Board May 5, 2023

VOLUME 3 MAPS

1. Comprehensive Plan Objectives (CPU), dated 9/12/22, revised 10/19/22
2. 2009 Plan Map 2 Proposed Recreation Zoning District, dated March 2009
3. Wetlands Floodplains and Waterbodies Map, dated 10/5/21, revised 9/12/22
4. Aquifer Protection Overlay(AQO) Zone map, dated 9/7/21
5. Community Resources Map, dated 10/13/21, revised 10/18/22
6. Historical and Cultural Resources Map, dated 8/2/21, revised 10/29/21
7. Town of Fishkill Zoning Map Revised 8/22/18 Annotated to Highlight MF (Multi-family Residential Districts) and Development, Markups dated 10/6/21



CPLteam.com
ARCHITECTURE. ENGINEERING. PLANNING.

26 IBM Road
Poughkeepsie, NY 12601
(845) 454-3411

Date: 9/12/22

Revisions:
9/28/22
10/19/22

Drawn: MS

Checked: ETA

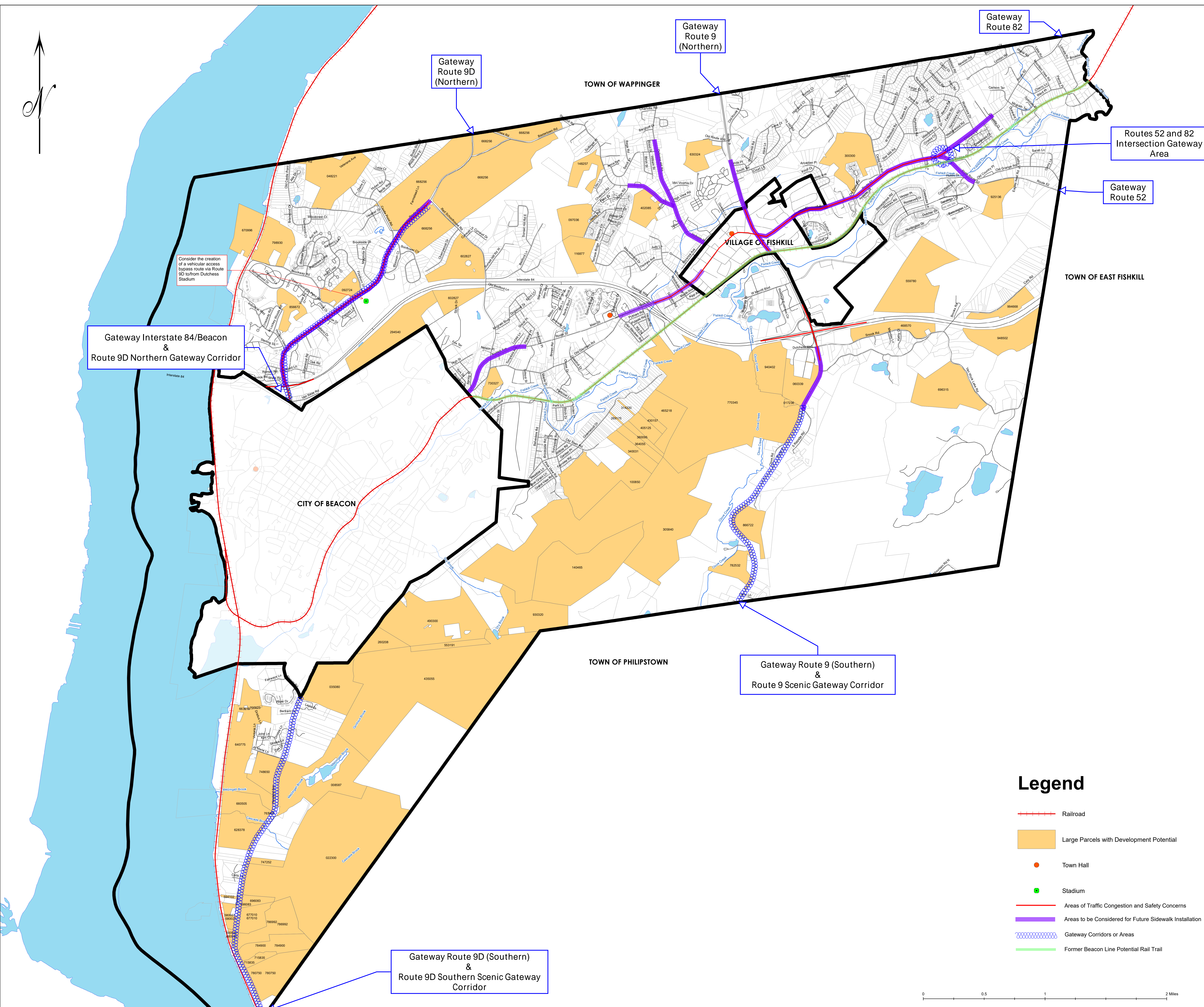
Scale: AS NOTED

Proj. #:

COMPREHENSIVE PLAN UPDATE (CPU) OBJECTIVES

TOWN OF FISHKILL
DUTCHESS COUNTY, NEW YORK

Figure 1



Consider the creation of a vehicular access bypass route via Route 9D to/from Dutchess Stadium

Gateway Interstate 84/Beacon & Route 9D Northern Gateway Corridor

Gateway Route 9 (Northern)

Gateway Route 82

Routes 52 and 82 Intersection Gateway Area

Gateway Route 52

Gateway Route 9 (Southern) & Route 9 Scenic Gateway Corridor

Gateway Route 9D (Southern) & Route 9D Southern Scenic Gateway Corridor

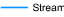
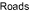





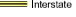

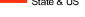



Legend

- Railroad
- Large Parcels with Development Potential
- Town Hall
- Stadium
- Areas of Traffic Congestion and Safety Concerns
- Areas to be Considered for Future Sidewalk Installation
- Gateway Corridors or Areas
- Former Beacon Line Potential Rail Trail

0 0.5 1 2 Miles

Map 2: Proposed Recreation Zoning District Town of Fishkill

Legend

- | | |
|--|--|
|  Streams |  Roads |
|  Water Bodies |  Local |
|  Parcels |  County |
|  Municipal Boundaries |  Interstate |
| |  Private |
| |  State & US |
-
- Recreation Parcels**
-  Private Owner
 -  Municipal and State Property, Scenic Hudson Property
 -  Unknown (no ownership record found)

Data Sources:

Streams and Waterbodies: National Hydrography Dataset, U.S. Geological Survey, 2007

Parcels: Dutchess County Real Property Tax Service Agency, January 2009

Municipal Boundaries: Dutchess County Real Property Tax Service, July 2008.

Recreation Parcels: Selected from tax parcels data, Dutchess County Real Property Tax Service Agency, by Dutchess County Environmental Council, 2005. Updated by CCEDC GIS Lab, March 2009.

Roads: Dutchess County Real Property Tax Service Agency, February 2009.

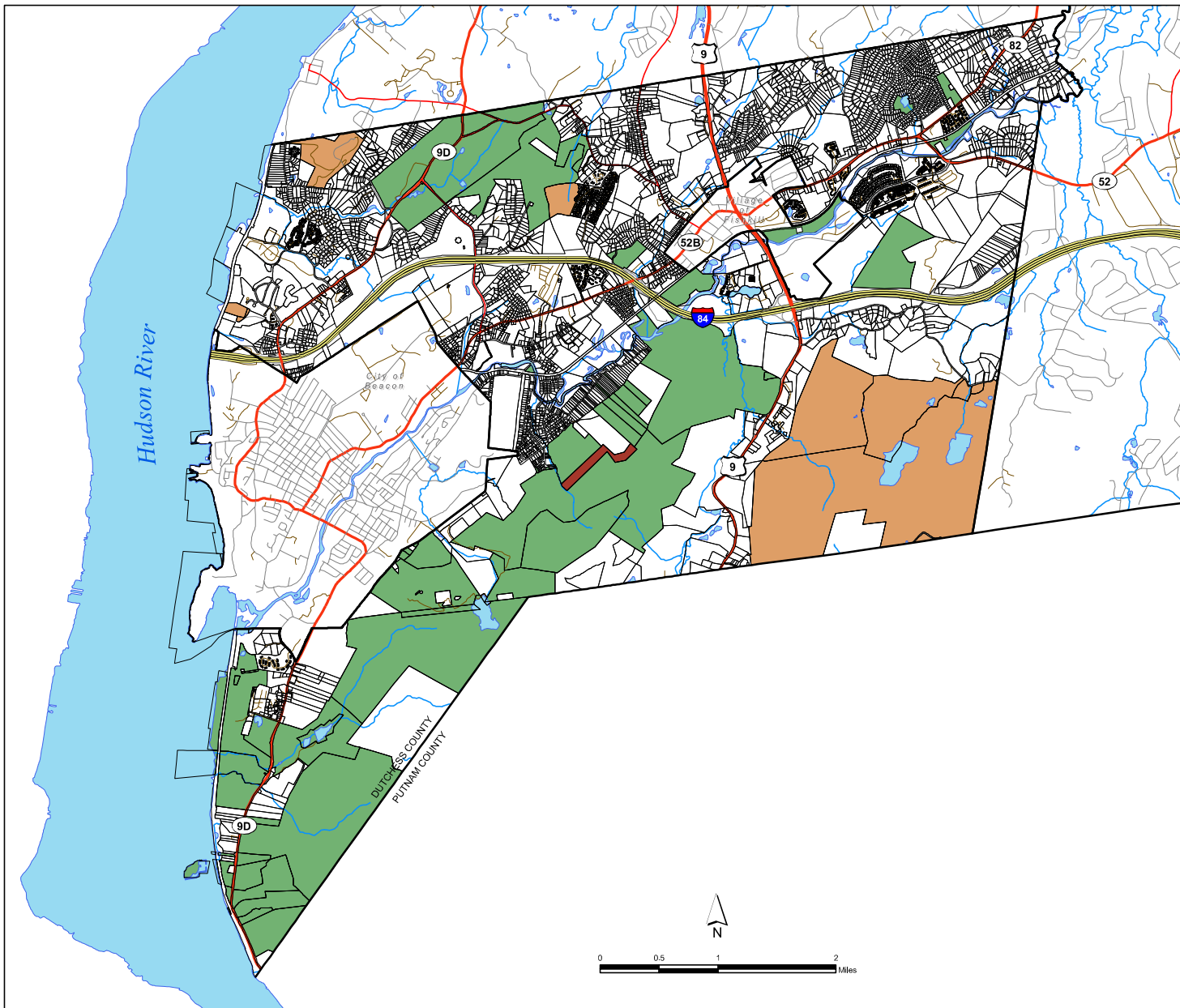
Prepared by Dutchess County Environmental Management Council, June 2005
Updated August 2009, Cornell Cooperative Extension Dutchess County GIS Lab

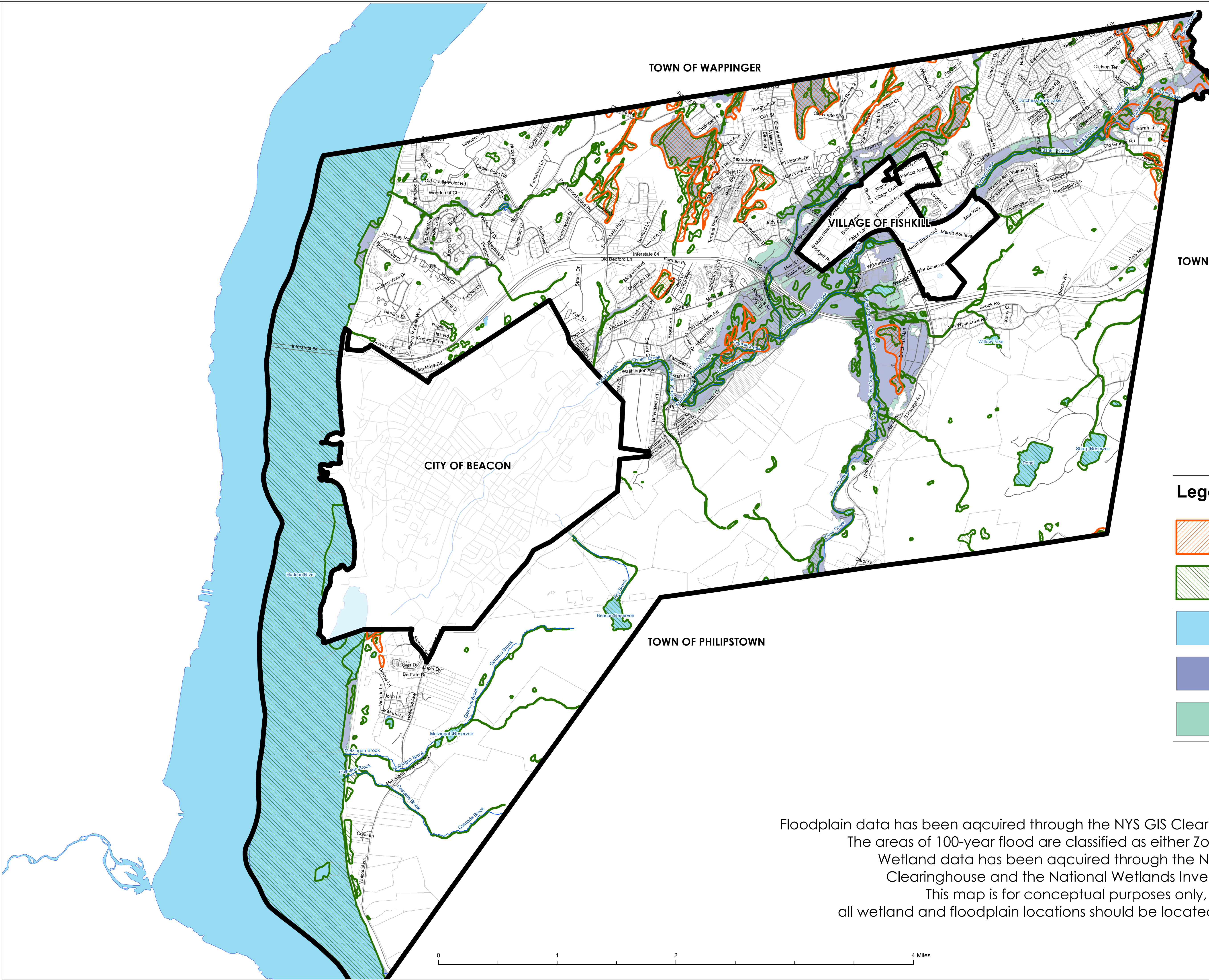
WARNING: This map is not a substitute for land surveys or legal documents.
No accuracy or completeness guarantee is implied or intended.



Cornell University
Cooperative Extension
Dutchess County

CCEDC provides equal program and employment opportunities.
The programs provided by this agency are partially funded
by monies received from the County of Dutchess.





CPLteam.com
ARCHITECTURE, ENGINEERING, PLANNING.

26 IBM Road
Poughkeepsie, NY 12601
(845) 454-3411

DATE: 10/5/21
REVISIONS:
8/25/22
9/12/22

DRAWN: MS

CHECKED: ETA

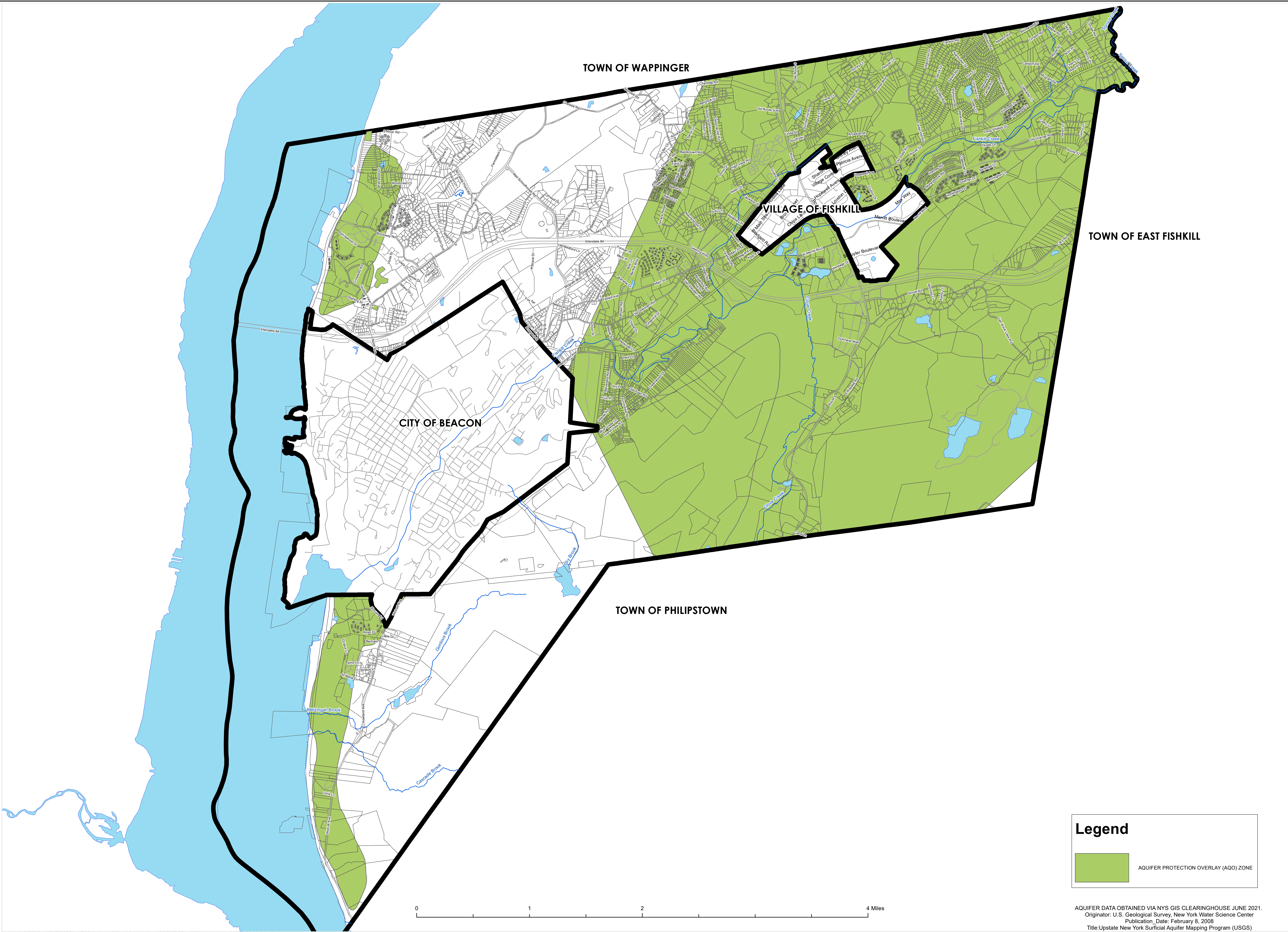
PROJ. #: 15535.00

WETLANDS, FLOODPLAINS, AND WATERBODIES
TOWN OF FISHKILL
DUTCHESS COUNTY, NEW YORK

Floodplain data has been acquired through the NYS GIS Clearinghouse and FEMA. The areas of 100-year flood are classified as either Zone A or AE. Wetland data has been acquired through the NYS GIS Clearinghouse and the National Wetlands Inventory. This map is for conceptual purposes only, all wetland and floodplain locations should be located in the field.

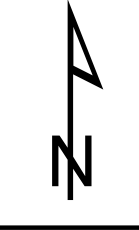
FIGURE 1

Document Path: S:\Projects\Fishkill_Town\GIS\Comp Plan Update\GIS\Correspondence\GIS\FishkillWetlandsFloodStreams.mxd | Friday, August 26, 2022 | CPL (LSteneach)



CPLteam.com
ARCHITECTURE, ENGINEERING, PLANNING.

9 Elks Lane
Poughkeepsie, NY 12601
(845) 454-3411



DATE: 9/7/21
REVISIONS:

DRAWN: MS

CHECKED: ETA

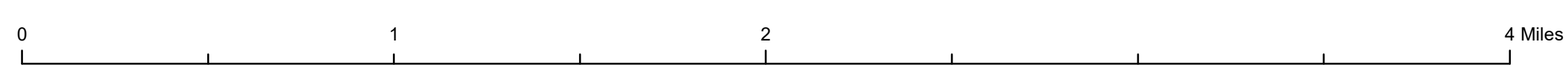
PROJ. #: 15535.00

AQUIFER PROTECTION OVERLAY (AQO) ZONE

TOWN OF FISHKILL, NEW YORK

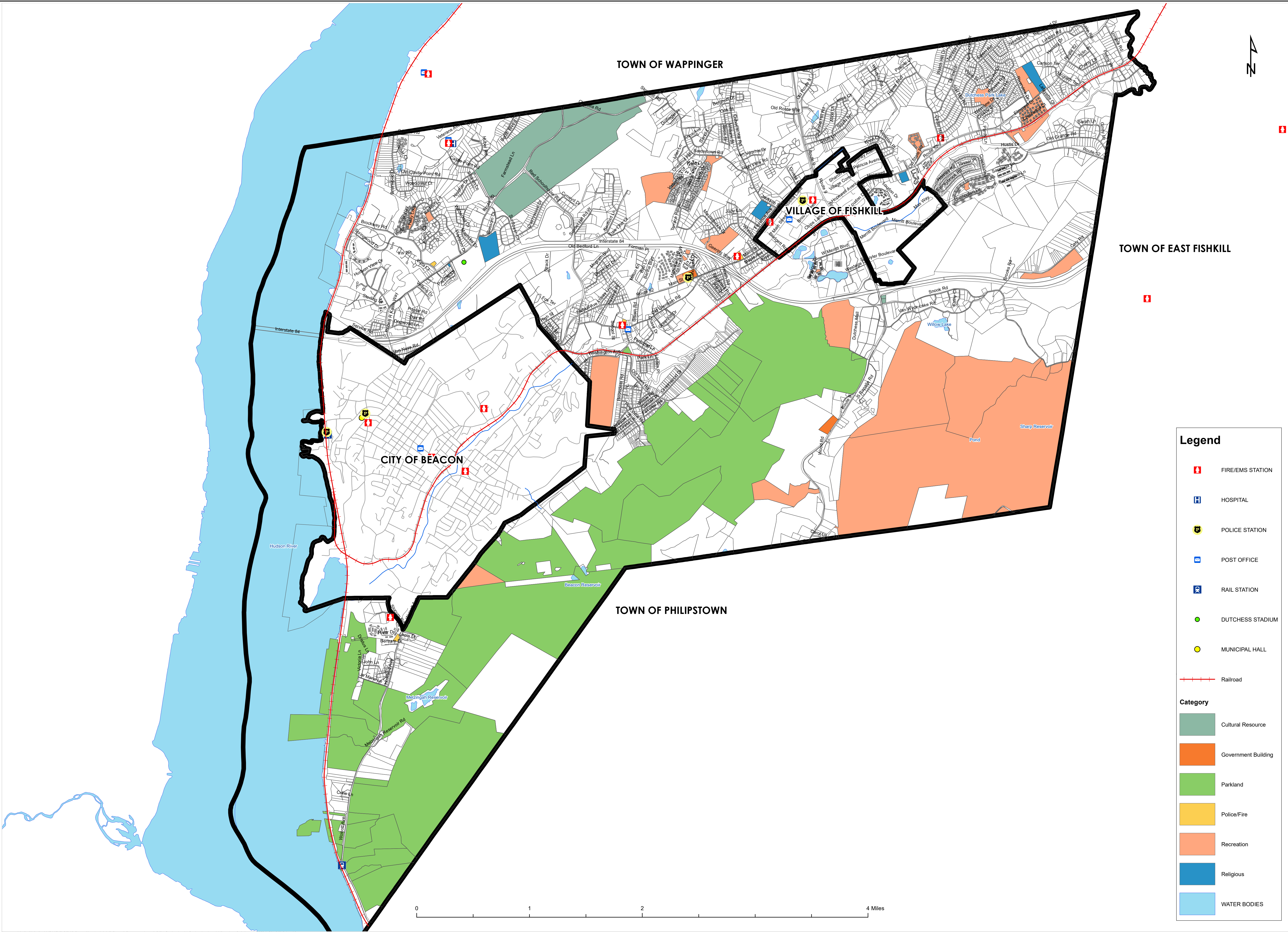
Legend

AQUIFER PROTECTION OVERLAY (AQO) ZONE



AQUIFER DATA OBTAINED VIA NYS GIS CLEARINGHOUSE JUNE 2021.
Originator: U.S. Geological Survey, New York Water Science Center
Publication Date: February 8, 2008
Title: Upstate New York Surficial Aquifer Mapping Program (USGS)

FIGURE 1



CPLteam.com
ARCHITECTURE, ENGINEERING, PLANNING.

26 Ibm Road
Poughkeepsie, NY 12601
(845) 454-3411

DATE: 10/13/21
REVISIONS: 10/18/22

DRAWN: MS

CHECKED: ETA

PROJ. #: 15535.00

- Legend**
- FIRE/EMS STATION
 - HOSPITAL
 - POLICE STATION
 - POST OFFICE
 - RAIL STATION
 - DUTCHESS STADIUM
 - MUNICIPAL HALL
 - Railroad
- Category**
- Cultural Resource
 - Government Building
 - Parkland
 - Police/Fire
 - Recreation
 - Religious
 - WATER BODIES

COMMUNITY RESOURCES

TOWN OF FISHKILL, NEW YORK

FIGURE 1

Document Path: S:\Projects\Fishkill_NY\GIS Comp Plan Update\GIS Correspondence\GIS Infrastructure\Infrastructure.mxd | Tuesday, October 18, 2022 | CPL (LStenbeck)

Legend

- HISTORICAL SITES
- LHC- LOCAL HISTORIC ZONING DISTRICT
- HISTORICAL MARKERS

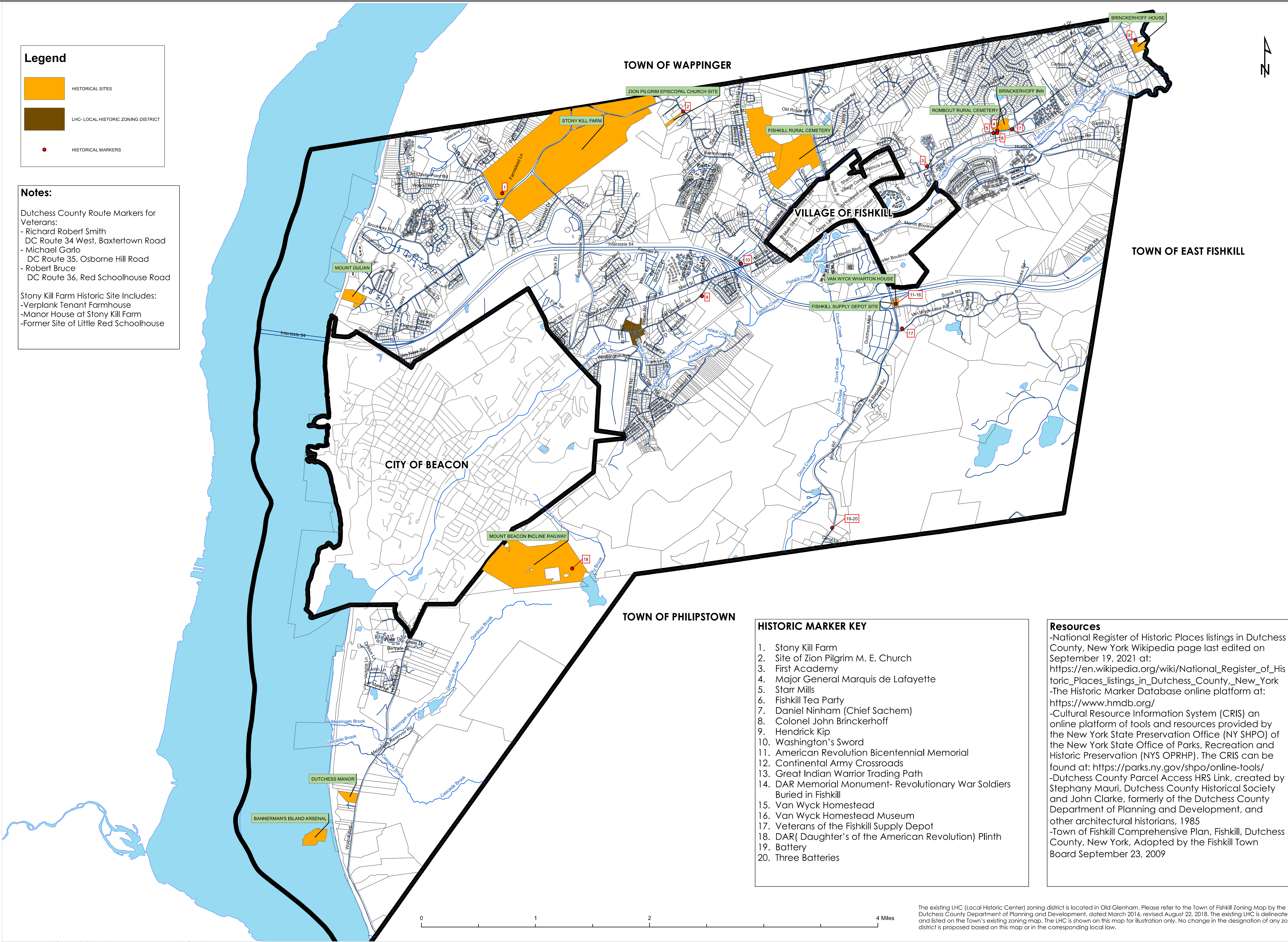
Notes:

Dutchess County Route Markers for Veterans:

- Richard Robert Smith
- DC Route 34 West, Baxtertown Road
- Michael Garlo
- DC Route 35, Osborne Hill Road
- Robert Bruce
- DC Route 36, Red Schoolhouse Road

Stony Kill Farm Historic Site Includes:

- Verplank Tenant Farmhouse
- Manor House at Stony Kill Farm
- Former Site of Little Red Schoolhouse



- HISTORIC MARKER KEY**
1. Stony Kill Farm
 2. Site of Zion Pilgrim M. E. Church
 3. First Academy
 4. Major General Marquis de Lafayette
 5. Starr Mills
 6. Fishkill Tea Party
 7. Daniel Ninham (Chief Sachem)
 8. Colonel John Brinkerhoff
 9. Hendrick Kip
 10. Washington's Sword
 11. American Revolution Bicentennial Memorial
 12. Continental Army Crossroads
 13. Great Indian Warrior Trading Path
 14. DAR Memorial Monument- Revolutionary War Soldiers Buried in Fishkill
 15. Van Wyck Homestead
 16. Van Wyck Homestead Museum
 17. Veterans of the Fishkill Supply Depot
 18. DAR(Daughter's of the American Revolution) Plinth
 19. Battery
 20. Three Batteries

Resources

- National Register of Historic Places listings in Dutchess County, New York Wikipedia page last edited on September 19, 2021 at: https://en.wikipedia.org/wiki/National_Register_of_Historic_Places_listings_in_Dutchess_County,_New_York
- The Historic Marker Database online platform at: <https://www.hmdb.org/>
- Cultural Resource Information System (CRIS) an online platform of tools and resources provided by the New York State Preservation Office (NY SHPO) of the New York State Office of Parks, Recreation and Historic Preservation (NYS OPRHP). The CRIS can be found at: <https://parks.ny.gov/shpo/online-tools/>
- Dutchess County Parcel Access HRS Link, created by Stephany Mauri, Dutchess County Historical Society and John Clarke, formerly of the Dutchess County Department of Planning and Development, and other architectural historians, 1985
- Town of Fishkill Comprehensive Plan, Fishkill, Dutchess County, New York, Adopted by the Fishkill Town Board September 23, 2009

The existing LHC (Local Historic Center) zoning district is located in Old Glenham. Please refer to the Town of Fishkill Zoning Map by the Dutchess County Department of Planning and Development, dated March 2016, revised August 22, 2018. The existing LHC is delineated and listed on the Town's existing zoning map. The LHC is shown on this map for illustration only. No change in the designation of any zoning district is proposed based on this map or in the corresponding local law.



CPLteam.com
ARCHITECTURE, ENGINEERING, PLANNING.

26 IBM Rd
Poughkeepsie, NY 12601
(845) 454-3411

DATE: 8/2/21
REVISIONS:
9/10/21
10/20/21
10/29/21

DRAWN: MS

CHECKED: ETA

PROJ. #: 15535.00

HISTORIC AND CULTURAL RESOURCES

TOWN OF FISHKILL, NEW YORK

FIGURE 1

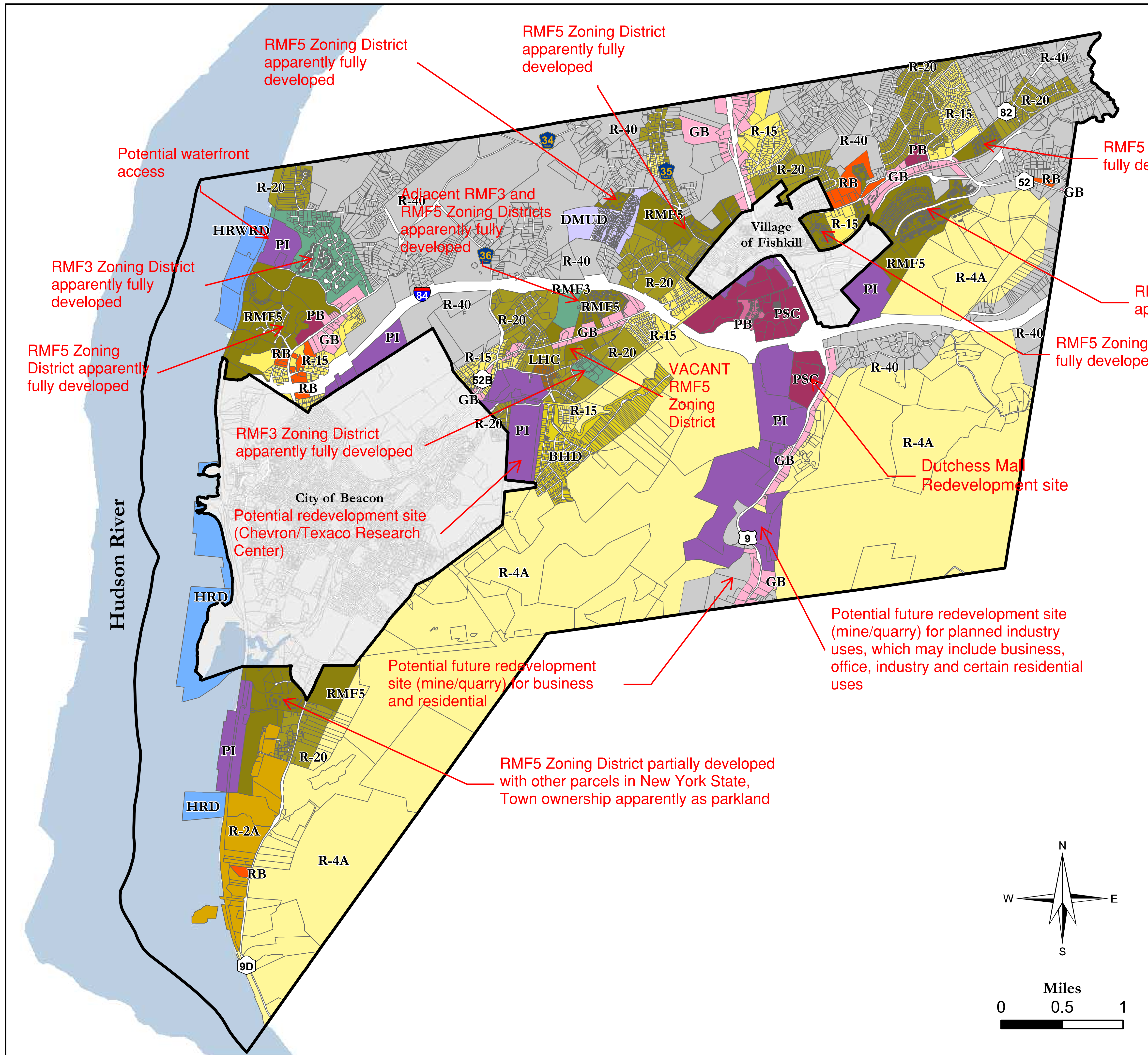
Town of Fishkill Zoning Map



Map Prepared By Dutchess County
Department of Planning and Development
March 2016
Revised: November 1, 2017
Revised: August 22, 2018

Zoning District boundaries are enacted by the Municipalities. These maps are based on information supplied by the Municipalities, per agreement with Dutchess County Department of Planning and Development. Zoning district lines are updated at the pleasure of the Municipality. Check with local municipal officials for most recent boundary delineations.

Markups provided to highlight multifamily zoning development and potential sites for redevelopment, dated October 6, 2021.



Legend

- MUNICIPAL BOUNDARIES
- PARCEL BOUNDARIES
- Zoning Districts**
- BHD, BEACON HILLS DISTRICT
- DMUD, DESIGNED MULTIPLE USE DEVELOPMENT DISTRICT
- GB, GENERAL BUSINESS DISTRICT
- HRD, HUDSON RIVER DISTRICT
- HRWRD, HUDSON RIVER WATERFRONT RECREATION DISTRICT
- LHC, LOCAL HISTORIC DISTRICT
- PB, PLANNED BUSINESS DISTRICT
- PI, PLANNED INDUSTRY DISTRICT
- PSC, PLANNED SHOPPING CENTER DISTRICT
- R-2A, 1-FAMILY RESIDENTIAL DISTRICT
- R-4A, 1-FAMILY RESIDENTIAL DISTRICT
- R-15, 1-FAMILY RESIDENTIAL DISTRICT
- R-20, 1-FAMILY RESIDENTIAL DISTRICT
- R-40, 1-FAMILY RESIDENTIAL DISTRICT
- RB, RESTRICTED BUSINESS DISTRICT
- RMF-3, 3 MULTI-FAMILY RESIDENTIAL DISTRICT
- RMF-5, 5 MULTI-FAMILY RESIDENTIAL DISTRICT

